

## TYPE 305 INDUSTRIAL FOLDING SHUTTER DOORS

C1/SfB reference by RIBA SfB Agency

(31.4) Xh



### APPLICATIONS

Purpose designed top hung one or two part folding shutter doors are manufactured to suit all types of application in sizes up to 16m wide x 8m high.

A traditional design of twin pickets housing the rolled lattice ensures ease of operation. This structure provides the strength to resist impact and high wind pressures whilst the bolt up construction facilitates maintenance.

### CONSTRUCTION

**HINGED GATE FRAME** Of a traditional design comprising galvanised steel lattice interconnected and fitted between two continuous galvanised vertical steel pickets providing a robust gate framework. All bolted construction for ease of repair in the event of impact damage.

**SHUTTER LEAVES** 1.2mm (18g) pre-galvanised steel 230mm wide with vertical ribbing for extra strength, connected on outer and inner face by galvanised steel sections. Galvanised leading edge locating with galvanised receiver channel.

**TOP TRACK** 100mm x 70mm galvanised cold rolled channel section to BS1449 Part 1:1972 fitted with galvanised steel cover plate. Door suspended by means of hardened steel roller bearing assemblies on a 22mm dia. galvanised hanger.

**BOTTOM GUIDE TRACK** Galvanised malleable iron bottom toe guides bolted between the pickets run in a deep formed galvanised 'U' section. Sump boxes and very heavy duty double channel bottom track can be supplied as an extra.

**FITTINGS** Galvanised bow handles fitted inside and outside to a galvanised leading edge. Locking by means of hasp and staple, as standard fitted to either face of door. A hook bolt lock or other special security locks may be fitted within the leading edge, as an extra.

### CLOSURES

Galvanised steel end panels fitted when door is located behind the jambs. Galvanised steel hoods to externally fitted door.

### OPERATION

Most doors may be operated manually but electrical operation is available whatever the door size, whether one or two part on 415 volt, 3 phase, 50Hz electrical supply. Drive is by means of an endless chain with tensioner. A torque limiting device automatically stops the door in the opening or closing cycle in the event of obstruction. Control is by press-to-run push button contactor with open, close and stop controls. All conduit and wiring work undertaken as an extra.

### EXTRAS

Vision Panels, Brush Seals, Remote Push or Key Operation, Inductive Loops, Photo Cell, Card Reader, Time Delay.

### FINISHES

A galvanised finish is standard although as an alternative polyester coating in various colours may be applied to the exterior face. Plastisol finish also available.

### MAINTENANCE

Doors are built to last but periodic maintenance will ensure long life and trouble free operation. Subject to use, lubrication of joints and bearings should be carried out at three monthly intervals. The bottom track should be checked for damage and kept clear of debris. Periodic maintenance facility available on request.



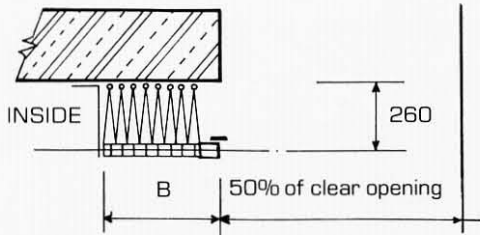
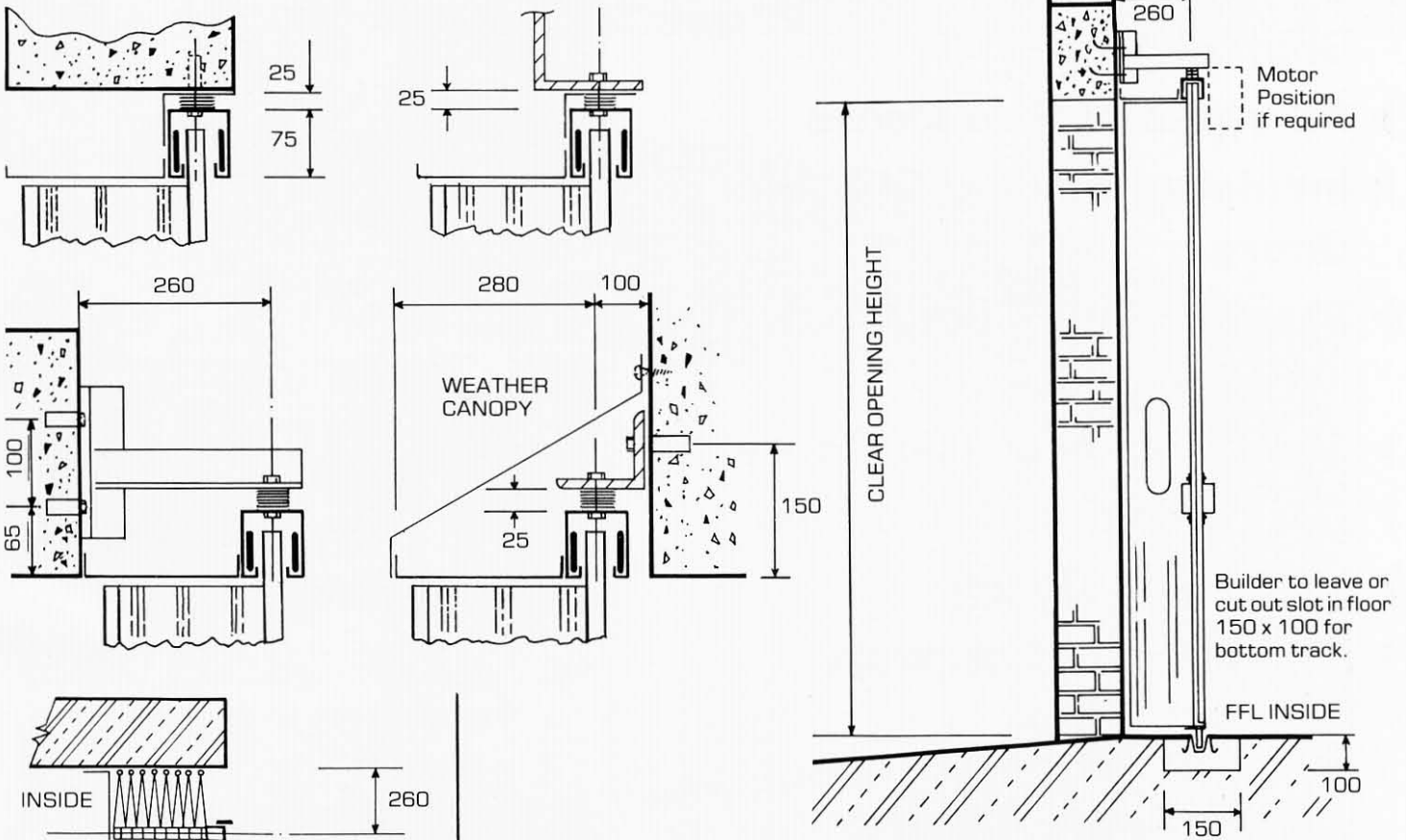
# System Doors

SYSTEM ROLLING SHUTTERS LTD TRADING AS SYSTEM DOORS

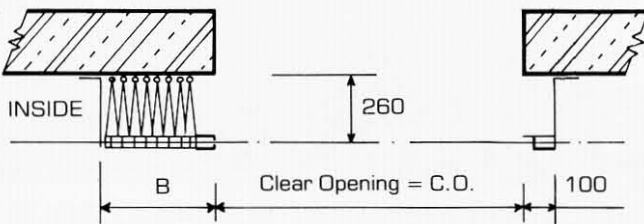
33 Albert Street, Syston, Leicester LE7 2JB. U.K. Telephone (0116) 260 8841. Fax (0116) 264 0846  
email: sales@syston.com or visit www.syston.com

# SOME FIXING ARRANGEMENTS & APPLICATION LAYOUTS

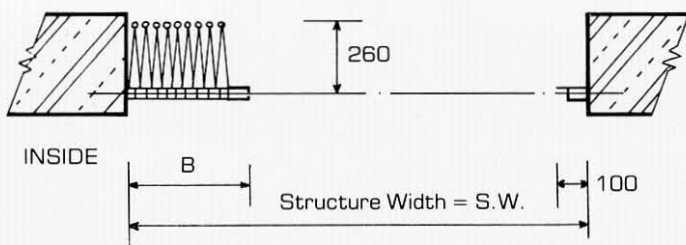
Doors can be fixed inside or outside the opening and can be arranged as Left hand or Right hand, single or pairs of doors.



Plan showing the Left Hand half of a typical pair of doors.



Plan showing a Left Hand single door fixed behind.



Plan showing a Left Hand single door fixed within opening.

BUNCHING CHART FOR 230mm LEAF			
For Single Doors up to 6000 high x 10,100 clear width			
Door Width Overall SW	Bunching Size B	Clear Opening CO	Number of Leaves in Pairs
1700	225	1475	4
2100	250	1850	5
2500	275	2225	6
2900	300	2600	7
3300	325	2975	8
3700	350	3350	9
4100	375	3725	10
4500	400	4100	11
4900	425	4475	12
5300	450	4850	13
5700	475	5225	14
6100	500	5600	15
6500	525	5975	16
6900	550	6350	17
7300	575	6725	18
7700	600	7100	19
8175	700	7475	20
8575	725	7850	21
8975	750	8225	22
9375	775	8600	23
9775	800	8975	24
10175	825	9350	25
10725	1000	9725	26
11125	1025	10100	27

**A pair of doors can be 20,200 clear width. For doors larger than the above sizes please contact our technical department.**



SYSTEM ROLLING SHUTTERS LTD TRADING AS SYSTEM DOORS

33 Albert Street, Syston, Leicester LE7 2JB. U.K. Telephone (0116) 260 8841. Fax (0116) 264 0846

email: sales@syston.com or visit www.syston.com

© We reserve the right to change or modify specification without alteration to this leaflet