

SELF COILING STEEL ROLLING SHUTTER

C1/SfB reference by RIBA SfB Agency

(31.55) Xh2

Specification No. 3



APPLICATIONS

Designed for industrial and commercial use — max. size 2.5m x 2.5m — face fitted or fitted within openings of steel, brickwork or concrete construction. Openings in excess of 2.5m may be divided using fixed or removable intermediate guides.

OPERATION

Manually operated by means of lifting handles on bottom rail. May be electrically operated if required.

SPECIFICATION

Fully interlocking galvanised lath of gauge to suit application, secured with pressed steel endlocks. Counter balancing by helical springs within steel barrel. Mechanism mounted between steel bracket plates which incorporate fixing angles. Shutter curtain retained within steel side guides of suitable depth to suit opening width. Shoot bolts to take customers padlocks are provided as standard. Cylinder key locks are available at extra cost. Galvanised hoods and fascias are available at extra cost if required. Customer to provide adequate support structure to carry imposed load of door and fixings.

FINISH

Shutter curtain and guides galvanised, remainder primed for painting by others. Alternatively, all metalwork can be finished polyester powder coated in a variety of Syntha Pulvin colours to give a durable decorative finish.

MAINTENANCE

Doors are built to last but periodic maintenance will ensure a long life and trouble-free operation. Maintenance Agreements can be arranged with our Service Department.

System Doors

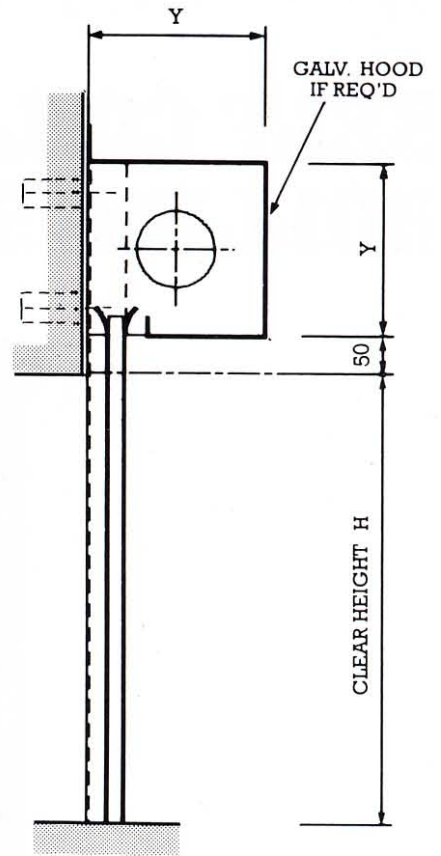
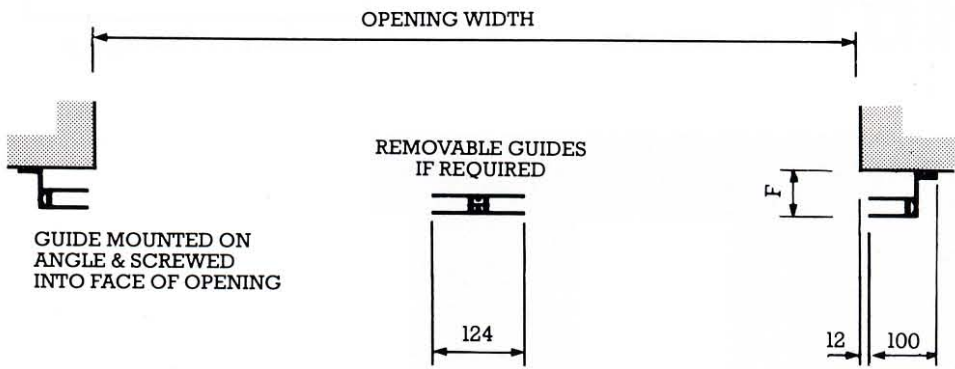
SYSTON ROLLING SHUTTERS LTD TRADING AS SYSTON DOORS

33 Albert Street, Syston, Leicester LE7 2JB. U.K. Telephone (0116) 260 8841. Fax (0116) 264 0846
email: sales@syston.com or visit www.syston.com

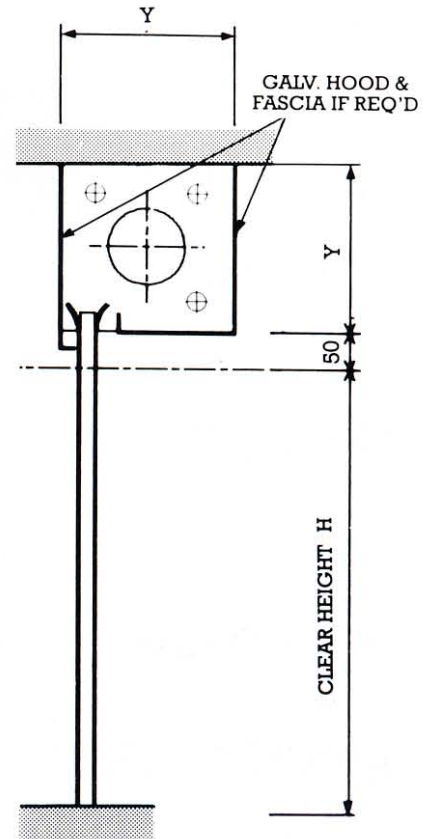
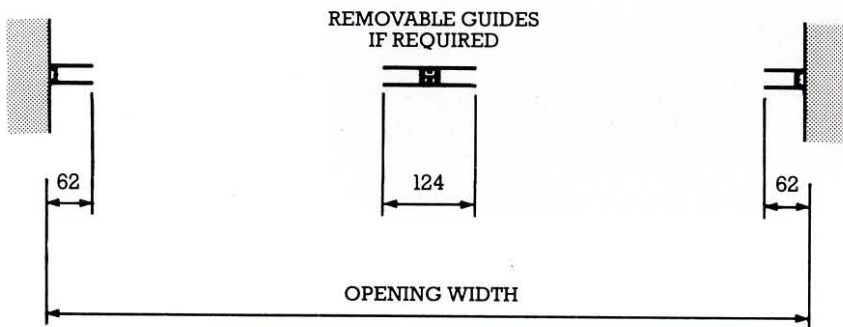


Incorporating DSMA & ABHM

FACE FIT



FIT WITHIN



HEIGHT H	Y	F
0—1219	230	50
1220—1829	254	50
1830—2438	280	50
2439—3048	305	65

IF SHUTTERS ARE TO REVERSE ROLL, THESE DIMENSIONS WILL INCREASE BY 25.

ALL DIMENSIONS IN MILLIMETRES



SYSTEM ROLLING SHUTTERS LTD TRADING AS SYSTEM DOORS

33 Albert Street, Syston, Leicester LE7 2JB. U.K. Telephone (0116) 260 8841. Fax (0116) 264 0846

email: sales@system.com or visit www.system.com

© We reserve the right to change or modify specification without alteration to this leaflet